

Police probe
fire at heritage
East Melbourne
terrace

Sod turned for
\$6 million Ryder
Pavilion
redevelopment

NEWS



Urban Camp turns 40!

Lord Mayor Sally Capp joined some little lodgers last month to celebrate 40 years of Urban Camp, which has served as a unique bridge between urban and rural lifestyles while offering an extraordinary camping experience right in the heart of the city at Royal Park. More on page 7. Photo: Hanna Komissarova.

Lygon St set for footpath revamp but traders want the whole strip completed

“ A long-standing battle to have safer and more attractive footpaths along Carlton’s iconic Lygon St will see a portion of renewal works undertaken, but traders say they want certainty the whole street will be revamped.

WORDS BY
BRENDAN REES



The City of Melbourne confirmed that works would occur along the east side of Lygon St between Queensberry and Pelham streets, which would see asphalt footpaths converted to bluestone within the next financial year.

The announcement was made as part of the council’s draft budget 2024/45 in allocating \$5 million on streetscape improvements across the municipality to “improve amenity and safety for pedestrians, customers, business owners and local residents”.

The street, known for its vibrant dining scene and historic charm, has been plagued by deteriorating footpaths that traders say pose a safety risk to pedestrians and customers, as well as detracting from the overall appeal of the street, which was first highlighted in the *Inner City News* June 2023 edition’s front page story.

While shop owners have welcomed the upgrade which they said would make a significant improvement, they are still seeking definitive answers on when the entire length of Lygon St would be carried out.

“It’s great to see works being established in Carlton and we look forward to the continuation and completion of the entire length of Lygon St,” Carlton Inc. executive officer Phil Mansour said.

“They’re old and tired and an OHS hazard to the public particularly with the elderly.”

But he also added, “We need more definitive timelines of when works are going to be committed for all of Lygon St – that’s probably our big point.”

DOC Espresso co-owner Vince Marchinno lamented the situation, saying “it is disappointing because this discussion has been going for 15 years”.

“It seems the area that gets most traffic for restaurants and yet people are having to sit out on footpaths that are on an angle,” he said. “It’s getting worse and come summer it’s unbearable.”

He also noticed that tree roots were growing through their venue, which he believed had caused some water pipes to crack underneath with moisture surfacing above.

Continued on page 5.



INNER CITY LOCAL, PAGE 06

Anthony Capon: 16 years with Et Al

East Melbourne resident and creative director behind fashion brand Et Al, Anthony Capon reflects on his remarkable journey with the store spanning 16 years; from chance encounters to the opening of a new store location.

Subscribe to our EDM’s for the latest news

INNER CITY NEWS | Delivered monthly to your inbox



Scan the QR
code to sign up

HYPERLOCAL

NEWS

CONTACT

Suite 208, 198 Harbour Esplanade
Docklands 3008
innercitynews.com.au
Tel: 8689 7980

EDITOR

Sean Car

PUBLISHER

Hyperlocal News Pty Ltd
ABN: 57 623 558 725

ADVERTISING

Hyper-local print works for advertisers in our digital world because local people are interested in local news. To sell to the inner-city community, contact Jack Hayes on 0401 031 236 or jack@hyperlocalnews.com.au

Reader contributions are welcome. Send letters, articles and images to: brendan@hyperlocalnews.com.au

The deadline for the July edition is June 21

Opinions expressed by contributors are not necessarily shared by the publisher.

hyperlocalnews.com.au
admin@hyperlocalnews.com.au

Follow us on social media by searching



Police investigate as heritage terrace in East Melbourne goes up in flames

Police are investigating a fire which broke out at an unoccupied building in East Melbourne on May 1.

WORDS BY
BRENDAN REES



Emergency services were called to the Albert St premises at around 9.40pm, with the building sustaining significant damage. No-one was inside at the time of the incident.

"A crime scene has been established while detectives work to establish the exact circumstances and cause of the fire," a Victoria Police spokesperson said.

The site at 204-208 Albert St is currently occupied by a two-storey Victorian building originally built as three terrace houses in 1859, which was graded as "contributory" under the City of Melbourne's Heritage Places Inventory March 2022.

The building, which was converted into a medical centre in the 1960s, is now boarded up.

Residents had in previous months cited concerns that the building was attracting squatters, as well as drug activity and vandalism, in what one said had created "distress and disturbance" in the community.

The building has remained empty, however developer Whitehaven Property Development Pty currently has plans to partially demolish the building and to construct a six-storey office building.

The City of Melbourne approved the plans last October after initially rejecting a proposal for a nine-storey building, a decision also upheld by the Victorian Civil



and Administrative Tribunal (VCAT) in July 2021, which cited the proposal's lack of suitability for the Albert St landscape.

The proposal seeks to retain the three adjoining heritage terraces on Albert St and demolish a non-heritage two-storey rear addition, with the proposed development to be built in its place.

The proposed development received 107 objections following strong opposition from residents and the East Melbourne Group (EMG), which argued the revised application failed to align with the character of the area and would block the sunlight to neighbouring homes.

The EMG is now fighting the revised proposal at VCAT.

Inner City News is not suggesting that the fire is connected to any concerns of the proposed development nor to squatters being at the building, only that the site has been approved for development.

In a statement, the City of Melbourne said it was made aware of the illegal use of this property as a squat in April.

"Council has since worked with the property owner to secure the building – and a report from early May showed no evidence of squatting," it said.

"We will continue to work with the property owner to rectify any further building issues."

A resident, who witnessed the fire, said they smelt smoke and saw two floors at the back of the heritage section "well alight, windows breaking, flames and smoke aplenty".

They said there were seven fire trucks on scene, including about 30 firefighters and three police officers.

Anyone who witnessed the incident, has CCTV/dashcam footage or information is urged to contact Crime Stoppers Victoria on 1800 333 000. ●

MELBOURNE RECITAL CENTRE PRESENTS

MELBOURNE
RECITAL
CENTRE



**SONG
PLAY**



Photos: Laura Manariti

Introduce children to the magic of music with Song Play!

A mix of fun interactions with real instruments, musical games, singing, and more, Song Play is perfect for families with children aged 0-5yrs.



For more information and to register please visit melbournerecital.com.au/songplay

Wednesday mornings during school terms at Melbourne Recital Centre, Cnr Southbank Blvd & Sturt St Southbank

LYGON LOCAL

Poppyshop: Childhood memories across generations in Carlton

Poppyshop, a toy store on Lygon St, will celebrate its 60th birthday next year.

WORDS BY
RUIXUE SU



Opened in 1965, Poppyshop stocks interesting toys from around the world and is a community icon that has stood the test of time.

Poppyshop is currently owned by Lisa Kelly, who bought the store from previous owner Pat Knox 10 years ago.

"I was a new mum and I had not been working for my old career. One day I walked into the store and heard it was for sale. I thought I can do this, so here I am 10 years later," Lisa said.

"Actually, I had never stepped foot in the store until that day. My friend had asked me to come down here to look for something as a gift and I saw the sign that it was closing if it wasn't sold."

Fate led Lisa into this store, and perhaps it's the best gift Lisa has found for herself.

"The previous owner Pat, she made the shop what it is today," Lisa said.

"For me it was about taking it over and making some different decisions. A lot of people always say, 'The shop hasn't changed.' But if you look at old photos that we have it has changed a lot."

When people walk into Poppyshop, the first thing they see is a variety of delicate and interesting toys; not only classic wooden toys, but also the latest and hottest toys.

Each toy is neatly placed, waiting for their owner's arrival. According to Lisa, there are at least 10,000 items in the store.

"When people come into the store, they feel like a child again so that's why they are drawn to lots of little things and fun things," Lisa said. "Our toys are mainly from Europe; they're very play-based learning toys for development and education. We also have the classic tin toys and old-fashioned toys. The best-selling toys would be Teddy Bear and Jack in the Box."

The store also offers games and puzzles, board games, puppets, rocking horses, dolls, arts and crafts and more.

When *Inner City News* visited Poppyshop last month, first-time customer Wanyuan said they were "attracted by the wide variety of toys in this store."

"I like this kind of store, which has a bit of vintage style. Although I am not a child, I will still walk into this store," Wanyuan said.

Lisa said the store brought generations of families together, creating special memories.

"The door to this treasure trove of amazing toys and gifts is always open. I feel we've continued the unique success of this amazing store that for many years to come will remain the favourite or go-to shop for many." •



Achievement Wellbeing Leadership

it's closer than you think



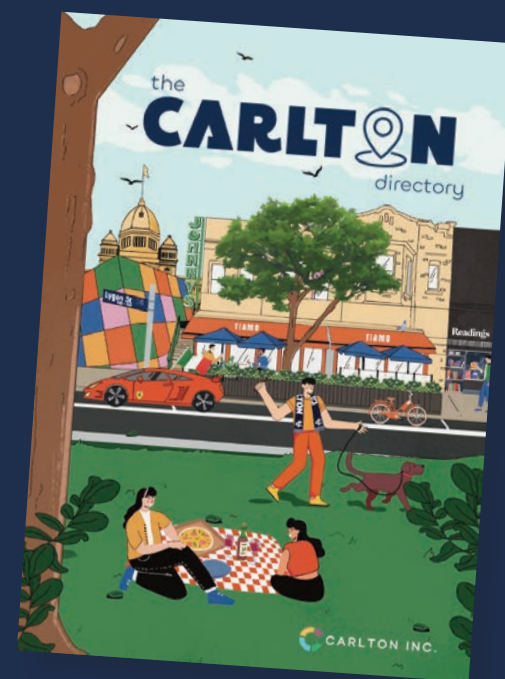
THE CITY
SCHOOL FOR
GIRLS



ACADEMY
OF MARY IMMACULATE



Book a
tour today



the
CARLTON
directory

Book your place in the inaugural Carlton Directory

The Directory is a guide to local businesses, celebrating all things Carlton, from history and culture to food, wine and coffee.

This guide covers everything you need to know, whether you're a resident, a worker, or a visitor.

To find out more, contact jack@hyperlocalnews.com.au
0401 031 236



Sod turned for new \$6m Ryder Pavilion

Work is officially under way to redevelop Parkville's Ryder Pavilion into a modern, multi-purpose facility.

WORDS BY
BRENDAN REES



The \$6.1-million project will see a new expanded facility featuring six gender neutral accessible change rooms, umpire change rooms, kitchen, and social spaces.

Set to open in 2025, the Ryder Pavilion redevelopment will be the third accessible sporting facility delivered in recent years – following the completion of the Western Pavilion and Brens Pavilion redevelopments.

The old Ryder Pavilion, located near the corner of Park St and The Avenue, was demolished in April, after contractors had completed works to upgrade the electrical and water supply systems.

The new building will have a range of sustainability features including double-glazed windows,

rainwater collection to use for toilet flushing, solar panels and electric appliance design, energy efficient LED lighting, and water-efficient fixtures.

To celebrate the start of the pavilion's redevelopment, Lord Mayor Sally Capp joined the council's transport, infrastructure and operations deputy portfolio lead Cr Davydd Griffiths in an official sod turning event on May 27.

"We know the best things come in threes and work is well under way on redeveloping our third pavilion in Royal Park – giving grassroots sporting clubs the facilities they deserve," Cr Capp said.

"We're so proud to see how the completed Brens and Western pavilions have made local sport even better and we're certain the new Ryder Pavilion will do the same – creating a contemporary and inclusive space for everyone – players, umpires and family spectators."

Cr Griffiths said, "As our community grows and more kids take to the field, it's vital our grassroots clubs have the facilities and resources they need to succeed."

While works take place, temporary facilities for sport clubs will be available on-site. ●

Planned tower could threaten Royal Exhibition Building "buffer zone"

The City of Melbourne has endorsed plans for a 40-storey tower near the Carlton Gardens and World Heritage-listed Royal Exhibition Building, despite concerns from advocates and residents about its potential to impact on the area's heritage values.



WORDS BY
BRENDAN REES



Chair of the Royal Historical Society of Victoria's heritage committee Professor Charles Sowerwine said it was "yet another tower that detracts from the Exhibition Building".

"It's in the area that, in their applications for World Heritage status in 2004, the Victorian and Australian governments promised would be a buffer zone in which strict heritage and height controls would maintain the 19th century feel that predominated," he said.

"But when Victoria implemented planning measures in 2009, the buffer zone was fatally compromised to permit development. The Shangri-La and other buildings are the consequence. They detract substantially from the period context that existed into this century."

The WHEA is managed in accordance with the World Heritage Strategy Plan (WHSP), which sets out strategies for the WHEA.

Currently, a WHSP for the Royal Exhibition Building and Carlton Gardens is being reviewed as a World Heritage-listed place, which must occur every seven years.

A draft amended WHSP is now sitting before Ms Kilkenny awaiting approval.

Should the Minister approve the strategy plan the proposed planning controls would go through a planning scheme amendment process. Those controls include a proposed a discretionary height limit of 115 metres and a mandatory maximum height of 125 metres.

According to a report from council officers, which was presented to councillors at their May 24 Future Melbourne Committee meeting, the proposed tower met the design objectives to "protect views and vistas of the drum, dome, lantern and flagpole of the Royal Exhibition Building and Carlton Gardens and maintain the visual dominance of the dome to a clear sky backdrop from primary vantage points". ●

Councillors unanimously voted in support of the \$100 million plan which would see the tower built at 54-66 La Trobe St, including a 160-room hotel, offices, and 61 apartments.

But the plans will need the ultimate approval from the Minister for Planning who has sought the council's feedback.

The City of Melbourne initially issued a planning permit in January 2019, but the developer Brarz Development City Pty Ltd has since sought to amend the approved permit, including increasing the building height from 104.8 metres to 143.7 metres.

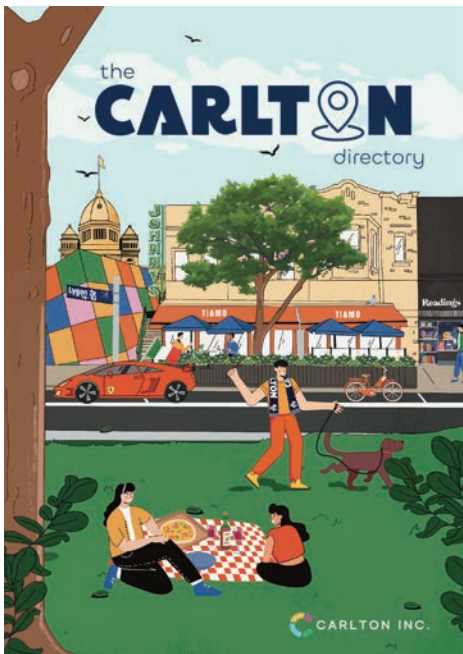
However, heritage advocates and residents fear the proposed tower would be inappropriate and negatively impact the Carlton Gardens World Heritage Environs Area (WHEA) that the site sits within.

The area acts as a "buffer zone" to the Royal Exhibition Building and Carlton Gardens while also assisting to conserve and protect their recognised World Heritage values, with proposals needing Heritage Victoria's approval.

"The proposed amendment is so demonstrably at odds with the original permit that it should be rejected," president of residents' group EastEnders Dr Stan Capp said.

"The La Trobe St site falls within the approved World Heritage Environs Area and accordingly should be rigorously assessed for its potential impact on World Heritage values. The Federal Minister has a role to play in this matter," he said.

"From a design perspective, advice to Future Melbourne Committee from the City of Melbourne's design excellence advisory panel would be instructive."



The Carlton Directory: a guide to everything postcode 3053

In partnership with local business association, Carlton Inc., Hyperlocal News (publisher of *Inner City News*) would like to introduce you to *The Carlton Directory*, a guide to, and celebration of, businesses throughout Carlton.

With 10,000 copies distributed in June, *The Carlton Directory* will reach every accessible residence and business in postcode 3053, along with City of Melbourne visitor and community centres.

It will feature sections from history and community to food and wine, arts and culture, and coffee.

If you are, or would like to become, a Carlton Inc. member, your business will be eligible for a 30 per cent discount on all advertising rates and sizes.

To feature your business in this publication, contact jack@hyperlocalnews.com.au or call 0401 031 236. ●

ELLEN SANDELL

GREENS STATE MP FOR MELBOURNE

Hi, I'm Ellen, your local state MP.
I'm here to help. Don't hesitate to get in touch.

(03) 9328 4637
office@ellensandell.com

60 Leicester Street
Carlton VIC 3053



Lygon St set for footpath revamp but traders want the whole strip completed

Continued from page 1.

Fab Succi, owner of Italian restaurant Tiamo, said the footpaths were "dangerous to walk on" and called for the council to do better.

He recently asked the council to inspect a tree at the front of his venue which was lifting the footpath around his outdoor dining area.

"Enough is enough. Stop wasting people's time because you're making a mockery out of people who voted you in," he said.

"We're paying the rates for the rest of the city and yet we're the forgotten ones."

Brunetti Classico owner Fabio Angele said his business made a big investment by converting the footpath to bluestone at the

front of Lygon Court with permanent parklets with planters also installed.

The project was completed at Easter, with Mr Angele saying the business had "contributed substantially to the project".

"It looks like one big piazza. Most of the locals have really appreciated it," he said.

Mr Angele said he hoped to see the rest of Lygon St completed to "bring back Carlton the way it used to be".

Carlton Inc president Sergio Alderuccio welcomed the upgrade, saying it would enhance the street.

"It's well overdue and I sense people are coming back and we are providing a great ambience, but the footpaths really let us down," he said. ●



▲ Brunetti Classico owner Fabio Angele with the completed blue-stone paving and new parklet. Photo: Hanna Komissarova.

Council budget delivers surplus; funding to be "rephased" on major projects

The City of Melbourne has announced a draft budget of \$781 million, delivering a "modest surplus" of \$101,000 after "difficult decisions" were made to "rephase funding" on major projects.

WORDS BY
BRENDAN REES



The surplus is the first time the council has returned to the black in five years, with surpluses forecasted to continue to 2028.

In handing down her final budget, outgoing Lord Mayor Sally Capp said a surplus was made possible after \$42 million was made in spending cuts – most of which involved slashing operational costs, rephasing projects, investing in new technology, and improving efficiency across the organisation, along with reducing spending on consultants.

"To achieve surplus in the draft budget for next year, the difficult decisions have really been focused around cutting spending," she said. "Deficit budgets are unsustainable. The great thing about returning to surplus budgets is that it gives future councils to continue to invest in what counts here in Melbourne."

However, Cr Capp maintained that spending cuts would not impact major projects including Greenline and the Queen Victoria Market renewal, but funding would instead be "rephased".

The \$316m Greenline trail will deliver four kilometres of promenades, parks and



▼ Cr Nick Reece, Lord Mayor Sally Capp and Cr Phil Le Liu announce the draft budget on May 14. Photo: Hanna Komissarova.

open spaces between Birrarung Marr and the Bolte Bridge.

"The rephasing of the budget for Greenline doesn't impact in any way the timing or finalising of Greenline and construction is under way," she said. These works include building the Seafarers Park in Docklands, and Birrarung Marr precinct, all on the north bank of the Yarra River.

The budget has allocated \$10m to Greenline in the next financial year, with a further \$12.5m in grant funding. This would be followed by \$12m and \$2m in grants in 2026, \$8m in 2027, and \$10m in 2028.

Funding of \$20 million from the Australian Government has been allocated across the delivery of the Greenline Project Masterplan and the site one works at Birrarung Marr.

"We have every confidence that Greenline will be delivered. The business case presents a compelling case for why Greenline is important city-shaping project for Melbourne," Cr Capp said.

Speaking about rephasing projects, she added, "These are difficult decisions, and it does show prudent financial management to make those difficult decisions to rephase funding on major projects."

The budget, announced on May 14, will see rates increase under the state government's maximum 2.75 per cent rate cap in the next financial year after being paused during the pandemic. Rates for property owners will increase by an average of \$37.

Parking fees are also set to go up by 10 per cent to \$54 million with more paid parking to be delivered outside of the CBD, while

parking fines are forecasted to increase by 2.4 per cent to \$40 million.

Waste charges for residents will be reduced by \$15 up to \$53 due to the municipality's growing number of users.

For businesses, more than half of the council's fees and charges will rise by less than five per cent. But \$1.6m will be invested to expand the council's business concierge program, which is expected to create 640 new jobs and inject \$70m into the economy.

Business precinct associations will also get \$1.2m, alongside small business grants of \$500,000 and \$150,000 Aboriginal small business grants programs.

Construction of the Make Room Project will be completed in August, which is repurposing a council-owned building at 602 Little Bourke St to address people experiencing homelessness by providing 50 studio apartments.

Overall, the budget will see \$224.7 spent on infrastructure, \$64.1 on cleaning and safety, and \$49.8 million on open spaces and greening.

\$13 million will also be spent on upgrading roads and footpaths.

Revenue from general fines including drinking alcohol in banned public areas, and dumping rubbish, is projected to jump from \$2.3m to \$3.7m.

The council's finance, governance and risk portfolio lead Cr Philip Le Liu said returning to surplus was an important step.

"We've cleared an underlying deficit of \$25.6 million by lowering operational costs, re-phasing projects, improving efficiency and doing more work in-house," he said.

Public feedback on the draft budget will be open online until June 3 via Participate Melbourne. ●



BE STRONG NOT TIRED

Melbourne's only over 40's personal training studio based right here in Carlton

"I'm probably stronger at 50 than I was at 30. If you want excellent results Prime40 will help you achieve them" **Shirley S**

📍 1/164 Cardigan street, Carlton 3053
🌐 www.prime40personaltraining.com.au



DISCOVER MORE

PRIME
40



INNER CITY LOCAL

Anthony Capon: 16 years with Et Al

“ East Melbourne resident and creative director behind fashion brand Et Al, Anthony Capon reflects on his remarkable journey with the store that spans 16 years; from chance encounters to the opening of a new store location.

WORDS BY GEORGIE ATKINS



Anthony's introduction to the Et Al team came unexpectedly during a visit to one of their stores in Collingwood. It was there that he met Christine, the founding director, and her husband, Les. "I had just left a design job and was looking for something else, and they said 'let's meet up'. That was 16 years ago and I've been with them ever since," Anthony told *Inner City News*. "They rarely work in the store, so it was one of those moments that was just perfect timing – it was serendipity." Since then, Anthony has played a pivotal role in the evolution of the Et Al brand, witnessing first-

hand the dynamic shifts within the retail sector. "It's been interesting seeing how the sector has evolved over the years, it's changing a lot and adapting to the times which is exciting and challenging," he said. Central to Et Al's ethos is a commitment to inclusivity and diversity, with the brand's range spanning from size 8 to 18 and encompassing menswear, womenswear, and unisex pieces. "It's something that is very authentic to us, because we believe you should be able to walk into a store and find something that feels amazing – whatever size or age or gender," Anthony said.



While Et Al remains a "niche brand" with an aesthetic characterised by "lots of black and monochrome", Anthony notes the brand's adaptability to the times and what clients are looking for through their sub-brand, which focuses on brighter colours. For Anthony, the most fulfilling part about working with the brand is seeing the impact Et Al's designs have on clients. "A lot of clients in the age bracket that we cater for have lost their confidence and their body shape has changed, but we want them to find something that they feel good in," he said. "When they walk out feeling amazing in a product, that's what keeps us going. It is tough sometimes, but seeing customers with tears in their eyes because they've spent months trying to find a mother-of-the-bride outfit and they can't find anything, that

for us is really rewarding." An enthusiastic advocate for life in East Melbourne, Anthony emphasises how immersing himself in the vibrant community and incorporating walks with his partner through the gardens into their daily routine has been "phenomenal". As Et Al prepares to open their new retail store in the Emporium Melbourne, Anthony hopes the brand will be able to reach a new demographic while remaining true to their values. "We're excited for the potential people that we may reach and meet. We'll have both menswear and womenswear, but there will also be a few exclusive designs that will be just at this store." ●

For more information: etal-australia.com

Magic Festival casts its spell over Melbourne

Melbourne Magic Festival (MMF) will return from July 1 to July 13, promising an exciting line-up of mind-blowing local and international magic acts.

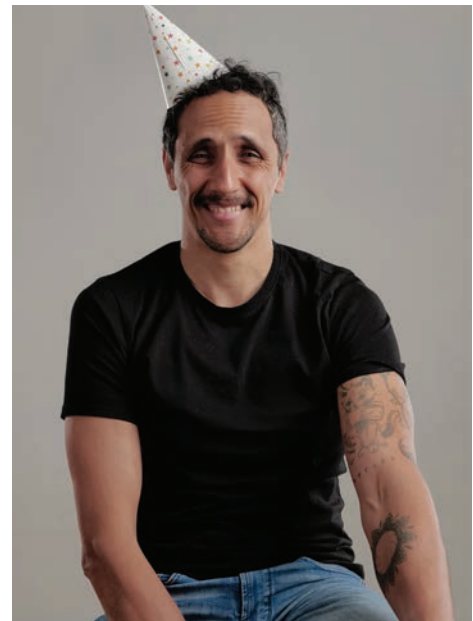
WORDS BY GEORGIE ATKINS



Be amazed as Melbourne transforms into a magical hub this winter, featuring exclusive events, workshops, and live performances suitable for all ages; from family-friendly to adults-only.

With almost 200 performances of 45 different shows, the MMF is the largest festival of its kind in the Southern Hemisphere, attracting magicians and magic fans from far and wide. The 2024 festival will also see international guest Hector Mancha takeover Arrow on Swanston with his solo show, *This is Not Magic*. "I started magic when I was bitten by a wizard as a child, from there I got powers," Hector told *Inner City News*. "The show *This is Not Magic* is about the internal struggle of an artist in a society fractured by the repression of the self ... just kidding! In reality, it's about explaining tricks and having a great time with everyone." Hector is a multidisciplinary artist with expertise in a variety of fields, including card magic, comedy, manipulation, parlour magic, pickpocketing, and shadow puppetry.

While looking forward to "meeting the people of Melbourne and hugging crocodiles", Hector admits that the process of getting ready to perform comes with its challenges. "To prepare for the show, I usually spend three months in Tibet in deep meditation and then I usually do a month-long marathon in the Sahara Desert – then I am ready for the show that night," he said. "It's a very, very idiotic and very funny show, where the one who has the best time is me." Established in 2008 by the Australian Institute of Magic, MMF was born with a dual purpose; to provide the people of Melbourne with access to world-class magic performances in a theatrical setting, and to offer performers a platform to showcase their art through captivating shows. The festival is also produced and funded by performers themselves, providing an important platform for local artists to showcase their talent. ●



Proudly representing the community in inner Melbourne

Evan MULHOLLAND MP

Liberal Member for Northern Metropolitan Region

9651 8242
 EvanMulhollandMP
 Evan.Mulholland@parliament.vic.gov.au

Shop 24, 55-63 Paringa Boulevard, Meadow Heights
 EvanMulholland.com.au

Authorised by Evan Mulholland MP, Shop 24/55-63 Paringa Boulevard, Meadow Heights VIC 3048.

University commits to disclose ties to weapons companies amid student protest

The University of Melbourne (UoM) has agreed to disclose ties to weapons manufacturers following a successful student encampment of a building on its Parkville campus.

WORDS BY
GEORGIE ATKINS



On May 15, UoM students joined thousands of individuals across the country rallying in remembrance of Nakba Day, or the "Palestinian Catastrophe", with students condemning the university's ongoing ties to some of the world's largest weapons manufacturers, demanding "disclosure and divestment".

Students from the Unimelb for Palestine (UM4P) collective organised the encampment as part of the protest, vowing not to leave until demands were met, despite receiving confirmation from administration "fully and explicitly" that they would not cut ties.

Sitting in the university's Arts West building, students have renamed the space Mahmoud's Hall in honour of 25-year-old prospective UoM student, Mahmoud Alnaouq.

Expected to pursue his Master's degree in international relations with UoM, which was his preferred study destination, Mr Alnaouq was killed alongside 17 of his family members in an Israeli air strike on October 20, 2023.

Following a week-long sit-in, the collective announced on May 22 that negotiations with management were successful in achieving disclosure of the university's relationships to weapons companies such as Lockheed Martin, Boeing, and BAE Systems.

"We have made the decision to end the encampment at South Lawn and the sit-in at Mahmoud's Hall," protest organiser Dana Alshaer said.

"Tomorrow morning, we will pack up after the university's public commitment to disclosure."

In a statement released from UoM on May 24, Vice-Chancellor Duncan Maskell stated he was "pleased" to have reached a resolution to the encampment.

"In an effort to provide greater transparency and remove ambiguity about research being conducted at the university, the university is committing to additional disclosure of its research grant arrangements as they relate to research projects, the parties who support that research and the quantum," the statement read.

Ms Alshaer says that the university is expected to disclose ties within a month's



time, which will be overseen by an independent, third party.

However, the collective emphasises that disclosure is "a major win, but it's also a first step", and students would continue to campaign for full divestment.

Despite reports that students involved in the encampment were protesting peacefully and students and staff were not being prohibited from entering or leaving the building, the university issued a statement on May 21 ordering those involved to "remove property and leave University premises".

The university claimed that an inspection conducted on May 17 found alleged damage to the building, including to safety measures such as emergency exits, fire panel access, and firefighting equipment, threatening police action and expulsion as a result.

Despite the university's claims, UM4P shared results of an independent OHS inspection conducted on May 20 by a qualified health and safety representative from the National Tertiary Education Union (NTEU), which found the university's statement to be "groundless".

"The NTEU inspection found no obstruction to required emergency exits, no obstruction to fire panel access; in addition, the firefighting equipment appeared to be in good working order," the NTEU OHS report said.

"The inspection did find that some of the ordinary entrances and exits were non-operational, however this is due to a UoM decision to close ordinary access to the building via swipe card access."

The university claimed that alternative arrangements had been made for 601 classes since the sit-in began, affecting more than 16,800 students.

However, UM4P emphasises that their eight-month-long campaign exists for "the university's disclosure and divestment from unethical companies that profit off genocide," and that any disruption to learning has been caused by the university.

"The students of the sit-in at Mahmoud's Hall are not responsible, nor do they have the power to cancel classes – it is the university that has decided to self-impose these sanctions." ●



Urban Camp marks 40 years

For the past 40 years, Urban Camp Melbourne has served as a unique bridge between urban and rural lifestyles, offering an extraordinary camping experience right in the heart of the city.

WORDS BY
GEORGIE ATKINS



Since its establishment in 1984, the camp has been a haven for schools and community groups, offering a nurturing environment outside the traditional classroom and home settings.

With its purpose-built 128-bed facility, Urban Camp serves as a home base for young people from regional areas to explore Melbourne's vibrant cultural, educational, and recreational offerings.

Situated in Royal Park, Urban Camp provides an opportunity for regional, remote, and Indigenous students to immerse themselves in city life while also connecting with their peers.

"Over the past 40 years, Urban Camp has helped more than 250,000 young people," CEO Elizabeth Compton said.

"It has been an honour to continue to uphold the passion of the teachers from Kensington Community School who began Urban Camp and continuously showcase the very best of our vibrant city."

Hosting 10,000 students annually, Urban Camp is the only dedicated school camp facility in Melbourne, offering free programming and collaborating with schools to tailor individualised itineraries that blend entertainment with education.

During the three-day camps, students have the opportunity to visit eight of Melbourne's most renowned attractions, including the Melbourne Zoo, MCG, The Big Issue Classroom, the Shrine of Remembrance, and Scienceworks.

"For many of our students, Urban Camp offers their first glimpse into Melbourne city life," Ms Compton said.

"For some, this not only marks their introduction to public transport and Melbourne's culture, but also an initial opportunity to grasp the stark contrasts, unique challenges and opportunities that distinguish the city from their hometown." ●



Heartbaker Bun Mee

Located in the heart of Melbourne, Heartbaker Bun Mee is a must-visit eatery that combines traditional Vietnamese flavours with creative twists.

From classic banh mis to flavourful pho, this hidden gem offers a diverse menu that will satisfy all your Vietnamese food cravings.

3/241 Flinders Ln

HeartbakerBunMeeMelbourne

heartbaker.bunmee

03 9654 0130

Supporting business



CYP-BS00413

ADVERTISEMENT
Your City of Melbourne community update



Our draft Budget invests in cleaning, making our city greener and building better community facilities closer to home.

OUR DRAFT BUDGET 2024-25

HERE'S WHAT'S IN IT FOR YOU

The City of Melbourne's \$781 million draft Budget 2024-25 is about doing what counts and delivering on our promises to the community, while strengthening our financial future.

Our draft Budget, together with our Annual Plan, sets out the priorities and investments we will deliver for Melburnians in the final year of our Council Plan 2021-25.

We are proud to announce a surplus Budget - a year ahead of schedule, with surpluses projected to continue to 2028.

We've made responsible choices so we can deliver what counts for our community now and continue to invest for our growing population in the years ahead.

The cost of living has been front of mind during the development of this Budget. We are continuing to deliver our core frontline services, along with free and affordable services our community relies on.

SEVEN HIGHLIGHTS FROM OUR DRAFT BUDGET

1. Keeping our city clean

We're supercharging our cleaning efforts with \$41.6 million to ensure our streets are sparkling. Our Clean Team will be on the ground 24/7 - cleaning our streets, prioritising the removal of graffiti, monitoring hotspots and collecting and disposing of public litter.

2. More parks and open space

We're transforming our city from grey to green in neighbourhoods that need it most - with almost \$50 million to deliver more open spaces, and ensure our city is greener and more sustainable. This includes new green open space on Normanby Road in Southbank, expanding the Miles and Dodds Street Reserve, plus opening the Bedford Street Pocket Park, North Melbourne. We'll also plant 3,000 trees and maintain our parks and gardens.

3. Building better community facilities

More Melburnians will be able to play the game they love - close to home. We've earmarked \$224.7 million to build city-shaping projects and upgrade grassroots sporting facilities. We'll open the new Kensington Community Aquatic and Recreation Centre, complete the first stage of the Greenline Project in Birrarung Marr, build the state-of-the-art Trader Shed at Queen Victoria Market and a new Ryder Pavilion in Royal Park. We'll also invest almost \$13 million to maintain and upgrade our roads and footpaths to make it as easy as possible to get around.

4. More affordable homes and homelessness support

We're doing our part to address the housing crisis - with a proposal to transform two sites on Curzon Street, North Melbourne and Victoria Street, West Melbourne into new affordable housing. We'll also open the doors to Make Room, our landmark social housing initiative, providing accommodation and support for 50 people experiencing homelessness.

5. Country's biggest events calendar

We're doing everything we can to bring more people into the city - and delivering the best events calendar in the country does exactly that, with an investment of more than \$26 million. All our favourites are back - the Christmas Festival, Moomba, New Year's Eve, Now or Never and Firelight Festival, along with a world-first underground light show. With most of our major events free to attend, everyone can enjoy an affordable day or night out in the city.

6. Lower waste collection charge

Our hardworking team will continue to empty bins from homes and businesses on time, while reducing the waste charge for residents this year. Owners of properties valued above \$515,000 will receive a \$53 reduction, with owners of properties valued below \$515,000 receiving a \$15 reduction.



Lower fees for waste collection

7. Making it easier to do business

We're expanding our Business Concierge service with \$1.6 million to provide more support for our small businesses and traders. A new-look, highly visible team will provide tools and advice for more new businesses beyond the CBD to start and succeed.



Local business owner Hakim Halim



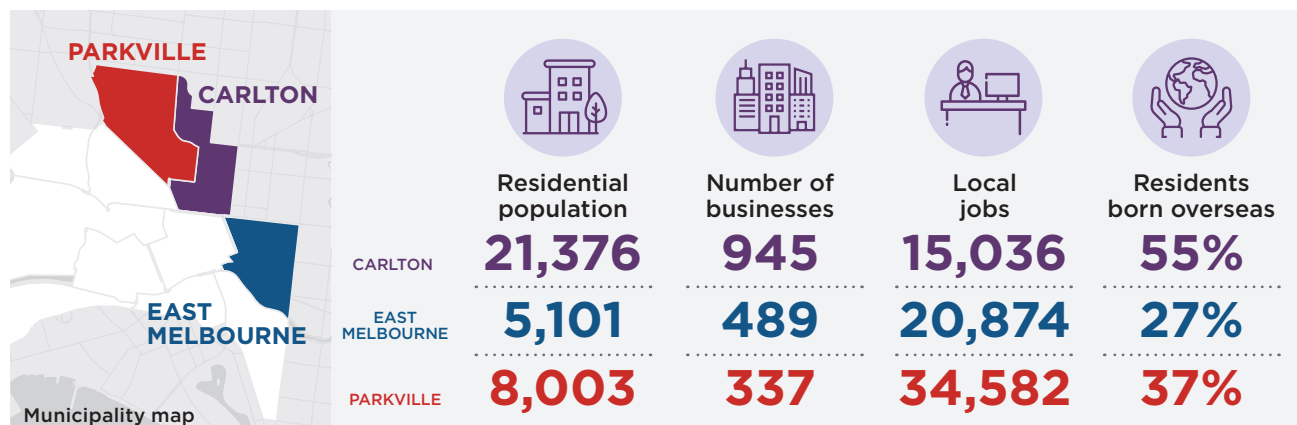
Our Clean Team is out removing graffiti 24/7

Have your say on the City of Melbourne draft Budget 2024-25 at participate.melbourne.vic.gov.au/our-plans-2024-25 by 5.30pm on Monday 3 June.

INVESTING IN YOUR NEIGHBOURHOOD IN 2024-25

The City of Melbourne is a dynamic municipality with 11 diverse neighbourhoods. While we're all Melburnians at heart, the support and services naturally differ for each area.

Our draft Annual Plan and Budget 2024-25 set out how we plan to invest in our neighbourhoods to deliver core services, maintain and improve parks, public spaces and recreational facilities, and fund events that will boost community connection as well as Melbourne as a world-class city.



Building better infrastructure

The City of Melbourne will invest \$224.7 million in 2024-25 to deliver new parks and better community facilities to ensure Melbourne remains a liveable and attractive city for residents, businesses and traders.

New infrastructure investments and upgrades in Carlton, East Melbourne and Parkville include:

- \$4.2 million for Ryder Pavilion community sports upgrade
- \$250,000 to enhance mobility and connection in Parkville through City North Urban Realm Improvements
- \$500,000 for Moonee Ponds Creek stormwater harvesting for Princes Park
- \$250,000 for Carlton Gardens meeting place landscape works

Renewal and maintenance works to be carried out include:

- \$1.3 million for parks and greening
- \$2 million for infrastructure
- \$1 million for buildings and properties
- \$482,000 for equipment, fixtures and furniture
- \$1.589 million for maintenance works

Grants support

Investment in our neighbourhoods in 2024-25 includes:

- \$104,000 Carlton Neighbourhood Learning Centre
- \$120,000 Carlton Inc. trader association
- \$100,000 for Connected Neighbourhoods Small Grants
- \$1.2 million for the Business Precinct Program
- \$100,000 for Business Event Sponsorship Program
- \$500,000 for Small Business Grants Program
- \$200,000 for Social Enterprise Grants Program



Delivering vital local services

We're providing the highest level of services to our community.

Community services

- At Carlton Learning Precinct, Gowrie Victoria has 98 places. The service includes maternal and child health, and parenting services.
- Kathleen Syme Library and Community Centre has a collection of 34,000 items, and East Melbourne Library has 25,000 items
- Our mobile library provides morning teas with digital literacy support at Carlton Public Housing Estate.
- The Drum offers education and employment pathways for 12 to 25-year-olds.

- Yarra Park Children Centre offers 61 places

- East Melbourne Childcare Centre on Powlett Reserve has 51 places.
- We manage Cooks' Cottage, Visitor Information Centre and lease The Pavilion and KereKere cafe in Fitzroy Gardens.
- Powlett Reserve community room is licensed to East Melbourne Neighbour Network for wellbeing and social activities.

Sporting and recreation venues

- Carlton Baths has a gym, pool and fitness.
- Princes Park in Carlton has sports fields for community organisations,

four tennis courts, and Princes Park Bowls Club.

- Carlton Recreation Ground is leased to Carlton Football Club.
- Carlton Gardens Tennis Club in Carlton Gardens.
- Powlett Reserve Tennis Centre has five courts
- Royal Park has sports fields used by 26 community sports organisations, 9-hole public golf course, and two tennis facilities, as well as Melbourne Zoo and Melbourne Sports Centre.

Parks and open spaces

We maintain 46 public open spaces and 14 playgrounds across Carlton, East Melbourne and Parkville.

YOUR SAY MATTERS

Earlier this year, we surveyed more than 4400 people across all neighbourhoods, checking in on priorities and making sure we're doing

what counts as we head into the final year of our four-year Council Plan.

The resounding feedback across the community is to continue to focus on improving safety, wellbeing, access, affordability and sustainability.

To find out more about what we're doing in your neighbourhood over the next 12 months, visit participate.melbourne.vic.gov.au/our-plans-2024-25 to have your say by 5.30pm on Monday 3 June.

Visit the Neighbourhood Portals to learn more about each neighbourhood at participate.melbourne.vic.gov.au/neighbourhoods

KEEP IN TOUCH

To stay connected with all the latest news from the City of Melbourne, follow us on social media and subscribe to *Melbourne News* at

news.melbourne.vic.gov.au

Connect with us

- [/cityofmelbourne](https://www.facebook.com/cityofmelbourne)
- [@cityofmelbourne](https://www.instagram.com/cityofmelbourne)
- [@cityofmelbourne](https://www.twitter.com/cityofmelbourne)





QUESTION:

What's the most relaxing way to enjoy Carlton?

Faces of the Inner City



CHRIS

Walking around Carlton Gardens



DANA

Listening to music on a park bench.



MAX

Sitting in the Carlton Gardens with a book.



“This is not binary”: City of Melbourne revises bike lane rollout

“
City of Melbourne Lord Mayor Sally Capp has called out “binary” debates surrounding transport in the city, declaring “everyone is welcome” to Melbourne, as the council called time on its accelerated bike lane rollout last month.

WORDS BY SEAN CAR



Cr Capp made the comments at the Future Melbourne Committee (FMC) meeting on April 23 where a majority of councillors endorsed an updated Cycling and Micromobility Infrastructure Program.

Following the adoption of its 2030 Transport Strategy in 2020, the council set an ambitious target of constructing 44 kilometres of new bike lanes by June 2024 – a goal that has fallen short by more than 23 kilometres.

The report on April 23 noted that as at March 2024, 27.4 kilometres had been installed across the city, 18.7 kilometres of which the council said had been delivered under its accelerated program.

The remainder of new separated bike

lanes have been provided through other council programs, including Turner and Graham streets in Fishermans Bend (2.1km), and a further 6.6km was installed along St Kilda Rd by the state government.

Councillors voted in support of “the cessation of the ‘accelerated program’” after the Department of Transport and Planning informed the council that it would no longer consider low-cost trial construction materials, opting instead for permanent solutions.

It also follows the state government’s April 4 announcement that the current e-scooter trial would be made permanent, and the council said this only reinforced the need for more physically separated lanes “to facilitate the safe movement of micromobility modes in addition to cycling”.

The report provided a rephased timeline on all current bike lane projects until 2026/27, with Grattan St, Arden St, Royal Parade, Abbotsford St, and Exhibition St (between Lonsdale and La Trobe streets) all next in the queue.

While speaking in support of the motion, Cr Rohan Leppert said it was a “bitter disappointment” that long-awaited bike lanes (or “riding lanes” which is now the preferred term to capture all modes of mobility) on Flinders St had been delayed.

“I am exceptionally disappointed that we’re not progressing with Flinders St at this time,” Cr Leppert said, adding that “we



really do need a bit more cooperation and love from the state government on this stuff.”

Following the “pause” to the bike lane rollout in the Hoddle Grid in 2022, the council committed to bring forward other routes outside the CBD, however Cr Leppert said many were still awaiting the state government “to do their bit”.

“We’re actually going to need a bit more cooperation and speed from the state in order to do our bits, and the state needs to do their bits. This is an ongoing problem,” Cr Leppert said.

Evaluation of separated mobility lanes showed a reduction in the crash rate by 46 per cent, a 22 per cent increase in usage and an increase in the number of women riders from 24 per cent to 36 per cent, while 30 per cent of e-scooter trips reported as replacing a car trip and 84 per cent of e-scooter trips utilised mobility lanes.

Despite the positive results, long out-

spoken critic of the program Cr Roshena Campbell was alone in voting against the plan, arguing that the city’s traders was a critical voice that was being ignored in the debate.

“I speak to traders who tell me that bike lanes have made it harder for their customers to get in and for them to do business; I’ve spoken to those customers who tell me that when they’re serious about shopping in the city ... they are coming in by car,” Cr Campbell said.

“If we make these bike lanes permanent, if we commit to rolling out more, we are ignoring a critical voice in this debate.”

The Lord Mayor responded by slamming “binary” discussions as unhelpful.

“Cr Campbell spoke of a message being received where some people feel that usually, if they’re coming from afar, that cars aren’t welcome. The message is, everyone’s welcome,” Cr Capp said.

“Let’s be clear: drivers of cars and vehicles still have the majority of space in our transport network. I’ll say it again: people who drive cars are welcome to our city; they have the majority of space available to them.”

“What the evidence and data shows us is that when we build riding lanes, people use them ... as leaders of the city, we have a responsibility to reflect the reality and that is a transport system that is able to welcome all modes of transport. This is about people.” ●



CHURCH OF ALL NATIONS

Easter Services

Thursday March 28 6.30pm Maundy Thursday (footwashing and meal). Wear suitable clothing if you wish to participate in foot washing.	Friday March 25 9.00am GoodFriday
	Sunday March 31 10.00am Easter Sunday (inc Holy Communion)

carltonunitingchurch.org.au | 180 Palmerston St, Carlton | 9347 7077



▲ (Top) a map highlighting the council’s revised rollout, and (right) two different modes use a local “riding lane”.

FIT FOR A KING:

VINCENT JENDEN REIMAGINES THE JOHNSTON COLLECTION

28 FEBRUARY – 25 AUGUST 2024




East Melbourne’s best-kept secret: explore exquisite fine and decorative arts in an historic townhouse.

JOHNSTONCOLLECTION.ORG | BOOK ONLINE



Victorian Labor Party conference backs public housing demolition

Just a few months ago the media was full of speculation about a division in the Victorian branch of the Labor Party over the proposed demolition of 44 public housing high-rise buildings in Melbourne.

This turned out to not be the case at their recent state conference where Labor's policies are decided.

An internal group of MPs – state and federal – calling themselves “Labor for Housing” was leading the public criticism of the plan. They were strongly criticising the plan to only increase resident numbers by only 10 per cent from 10,000 to 11,000 living in new “community” – not public – housing. They proposed a doubling to 20,000 residents.

This all fizzled out on the conference floor with a fake win that no public housing

lands would be sold off to private developers. The government plans already involve no sale of these lands. This is the Ground Lease Model (GLM) approach in operation after the disastrous failure of the original Public Housing Renewal Program that included land sales.

Private developers and government registered community housing providers secure demolished public housing land at no cost to build a mix of community, “affordable” and full market rent housing.

Labor for Housing promote themselves as public housing resident allies but nothing could be further from the truth.

So-called “affordable housing”

It may also be the case that the inclusion of so-called “affordable” housing in the redevelopments won over Labor for Housing delegates.

This housing has been described by the Labor government as being for “essential workers” – teachers, fire and rescue work-

ers, ambos, and childcare workers – so they can live closer to where they work.

Rents are set at a maximum of 90 per cent local full private market rents or 30 per cent of gross – not after tax – household income. A two-income household of \$140,000 would have to pay \$807 a week under this policy!

There is no transparency on how this is already operating on redeveloped public housing estates. Tenancy applications are being managed by private operators. There is no public reporting on the occupations of those getting accommodation, what the rents are and if they are in fact closer to their workplaces.

Real solutions to our housing affordability crisis

In my May column in *Inner City News*, I backed the Australian Greens' proposal for a national, public home builder that would build public housing and no-profit homes for first homebuyers. It is a proposal that

can work.

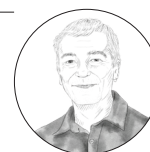
Immediate opportunities are available in the City of Melbourne where the council is calling for a mandated 25 per cent of all new housing build in the city to be affordable. Developers have been failing to use affordable housing bonuses for office development approvals because it is voluntary (*The Age*, April 12, 2024).

The council also owns two sites ideal for building public housing at 44-60 Curzon St, North Melbourne and at 325-341 Victoria St, West Melbourne.

The state government has abandoned an election promise to build a new Arden hospital – this land could be also used. ●

Cory Memery

CITY OF MELBOURNE
COMMUNITY CHAMPION 2020



Surf's up for Melbourne Zoo's otter family

Melbourne Zoo's otter family is hanging 10 on little waves created by keepers in their heated pool.

Using their muscular tails and streamlined bodies to beat the current, the family of five Asian Small-clawed otters are otterly-stoked to be splashing, twirling and surfing against water from a hose.

Melbourne Zoo wild sea life sciences manager Harna Burton said the keeper team noticed the otters loved the hose during routine cleaning of their habitat.

“One day we noticed the otters playing and splashing in the current created by the hose, so we decided to incorporate it as part of their regular sensory enrichment schedule,” Ms Burton said.

“They're incredibly curious and cheeky creatures, so it's such a joy to watch them swimming and putting their sensitive paws up against the splashing water.”

Otters are strong swimmers and use their tail to propel themselves through the water and to steer. They close off their ears and nostrils when swimming and can dive underwater for six to eight minutes at a time. Their long whiskers also help them to detect prey items when foraging under-

water and they use their sensitive paws to locate prey in murky water or mud.

Ms Burton said the younger pups enjoy playing in the water and paddling through the waves the most.

“Our three younger otters are so inquisitive and energetic and love twirling around under the water and fighting against the current, which is so fun for visitors to see,” Ms Burton said.

Asian Small-clawed otters are the world's smallest otters. They are classified as Vulnerable in the wild by the International Union for Conservation of Nature's Red List. Native to rainforests in several Asian countries, wild populations of Asian Small-clawed otters are threatened by poaching and habitat destruction to make way for housing and unsustainable palm oil plantations.

Zoos Victoria's *Don't Palm Us Off* campaign is calling for the clear labelling of palm oil on products in Australia, to allow otter fans and all animal lovers to make informed choices at the supermarket. ●

Pet's Corner



The half-blood prince of Carlton

Four years ago, Koda was adopted from Pet Rescue by his owner Chun.

WORDS BY
RUIXUE SU



Koda has a mysterious background, as people only know that half of his bloodline is Siberian Husky, but they don't know where the other half comes from.

His hair is short all year round, and his ears hang down naturally, giving him a cute appearance.

“Koda is enjoying life at Carlton. There is a park nearby and there's

nature strips around as well that he can run around in,” Chun told to *Inner City News*.

“He is very friendly as well with people and dogs.”

Koda has a very good personality and, according to Chun, he is a clingy dog. He is not wary of people and is willing to lie down and let people touch his belly.

As for playing fetch, Koda only plays on Koda's terms ...

“Koda really enjoys playing fetch at the nearby dog park, but only one way,” Chun said. “I throw the ball and he runs after it, but he doesn't bring the ball back.”

Asked to describe Koda in three words, Chun said, “fun, friendly, and diva”. ●



Demolition of Carlton's public housing towers

“ A sense of déjà vu permeates the Victorian Government decision to demolish the public housing towers as part of a scheme to remove 44 across Melbourne. ”

WORDS BY
PETER SANDERS

Many Carlton residents will remember the Housing Commission plans in the 1960s that led to mass demolition of terrace houses and the construction of the towers.

But for strong community action by the Carlton Residents' Association and other resident groups destruction would have been considerably worse. Part of the rationale was for "slum clearance". Hundreds of families were evicted from their homes and at the best settled in suburbs far from their local community.

The Victorian Government announced that "all 44 of Melbourne's high-rise public housing towers will be demolished by 2051, with five in Flemington, North Melbourne and Carlton replaced by 2031".

Already, more than two years ago, residents were removed from the two red brick towers near the corner of Elgin and Nicholson streets.

In September last year, then Premier Daniel Andrews announced that the demolition would require the "relocation of

10,000 residents across Melbourne". Many of these were born in these apartments and many have lived there for decades. Vibrant and diverse communities will be destroyed.

Priya Kunjan from RMIT Centre for Urban Research says that there is no "clear Justification" as to why the towers need to be demolished. He and six other RMIT academics released a paper that noted the redevelopment plan would exacerbate the housing crisis in a short time. There would be no "net gain supply" in the next decade and later only a small increase.

The government says that the renewal will "boost social housing by 10 per cent".

All this dislocation for a modest gain and considerable cost.

Architects, including members of the Australian Institute of Architects, believe

that the apartments could be renovated at a fraction of the cost of demolition and reconstruction. There are no practical reasons that would hinder renovation.

Studies show that it is economically feasible and environmentally sustainable to refurbish the buildings.

With renovation, residents could remain in the estate with staged building work and temporary housing while work is under way for clusters of apartments.

Australian households renting from State or Territory housing authorities dropped from six per cent in 1999-2000 to three per cent in 2019-2020. In Vienna and Paris 25 per cent of the population live in social housing.

We should be adding to the social housing and not removing what we now have.

We must respect existing communities ●

CARLTON HISTORY GROUP

The Olympic Games in Princes Park?

In the 1950s, as Melbourne was preparing to host the 1956 Olympic Games there were discussions and negotiations over where the main stadium for the Games would be.

The contenders were the Showgrounds, the Melbourne Cricket Ground and the Carlton Football Ground in Princes Park.

The Showgrounds were the first to be eliminated as being unsuitable, followed by the MCG where the conversion of the arena was considered to be engineeringly impractical. This left the stadium in Princes Park as the venue of choice, although it would need to be upgraded.

On March 24, 1952, the Melbourne City Council voted nine to one for the main venue for the 1956 Melbourne Olympic Games to be a 100,000-seat new stadium in Princes Park. The cost of this would be shared by the Federal Government (50 per cent), Victorian Government (25 per cent) and the council (25 per cent).

However, there were certain parties who were not happy with this decision.

The Prime Minister, Sir Robert Menzies, a long-time supporter of the Carlton Football Club, favoured this choice, but the Victorian State Premier John Cain (Senior) did not – he believed that the cost of re-developing the venue in Princes Park was too expensive.

At a conference of the organising committee on February 2, 1953, all interested parties except the Premier supported the Princes Park project. But Mr. Cain forced the issue by declaring that no State Government funds would be made available if the Games were to be based in Princes Park.

Rather than run the risk of losing the Games, the others then fell into line and agreed to the Melbourne Cricket Ground being the main venue. Not surprisingly the switch created considerable resentment at the Carlton Football Club.

Three years later, in November 1956, athlete Ron Clarke lit the flame that heralded the opening of the 1956 Olympic Games at the



Melbourne Cricket Ground. Some Olympic events were, however, held at the Carlton Football Ground in Princes Park.

In the years that followed there were some significant redevelopments of the grounds, but not on the scale that would have occurred if it had become the main venue for the 1956 Olympic Games. ●

Jeff Atkinson

PRESIDENT
JEFFANN@BIGPOND.NET.AU



HEALTH & WELLBEING

Training for tomorrow: investing in independence

In the world of fitness, goals often revolve around the immediate: losing weight, building muscle, or gaining strength.

While these are valid ambitions, there's a foundational goal that often goes overlooked: moving well and often.

This isn't just about enhancing today's performance but ensuring that you can continue to perform everyday tasks well into the future without pain or restriction.

During my early career as a clinical Pilates practitioner in a rehabilitation clinic, I encountered numerous individuals, some as young as their 50s, struggling with basic movements like standing up from a chair or

walking pain-free. These were often people who had spent years at desk jobs, their movement capabilities diminished by long periods of neglect.

It was a profound lesson: no matter what your current fitness goals, the core of your training should focus on movement longevity.

At Prime40, we often refer to this as "quality of life" training. It's not the glamorous side of fitness – you won't necessarily see these exercises on the social media feed or front page of a fitness magazine.

But stability, particularly around the core, hips and shoulders, is crucial for maintaining functional independence. These as I like to call "unsexy exercises" are critical yet frequently neglected because

they don't produce dramatic weight loss or muscle gain.

Personally, my training philosophy as I get older has evolved beyond mere aesthetics or immediate gains. I train to move better, to maintain balance and mobility, and ultimately, to foster longevity. My goal is to keep my body functioning at its peak, for as long as possible. This approach isn't about training for now; it's about training for a lifetime.

This concept of longevity training is at the heart of what we do at Prime40. Here, we emphasise that muscle strength and movement quality are equally important. Our programs are designed not just to make you stronger but to enhance how your body moves and functions every day.

Understanding how to effectively achieve longevity in movement can be daunting, especially if you're trying to correct years of neglect. That's where professional guidance comes in.

At Prime40, we're dedicated to crafting balanced, sustainable fitness plans tailored to your unique journey. If you're curious about enhancing how you move and live, we're here to support your path forward. ●

Kane Hamilton

PRIME40 PERSONAL TRAINING
PRIME40PERSONALTRAINING.COM.AU



METRO TUNNEL



Impressive progress at Parkville

Major construction at Parkville Station is now complete, as the opening of the Metro Tunnel in 2025 draws nearer.

Parkville will be connected to the rail network for the first time when the station opens, making transport easier for thousands of medical staff, students, patients, and family members.

The station – the second of five new state-of-the-art stations to be finished as part of the Metro Tunnel Project – will provide a quick and easy rail connection for Victorians to the busy health and education precinct.

Since construction began back in 2018, crews have worked to remove 80 Olympic-sized swimming pools worth of dirt, opening space for the station to be built beneath Grattan St.

The station has a footprint around the size of one-and-a-half MCGs, carefully designed to fit among the area's existing health, research and education institutions.

Passengers will enjoy an open, well-lit station concourse, with the Grattan St entrance's 54-metre-long and 6.5-metre-wide steel and glass entrance canopy allowing the station to fill with natural light.

The station's landmark artwork *Vernal Glade* by internationally acclaimed Melbourne artist Patricia Piccinni was installed in March on the concourse,

allowing the art to be bathed in natural light from the skylight canopy above.

Parkville Station will include a pedestrian underpass beneath Royal Parade that will be accessible and free for all pedestrians during station operating hours, allowing people to easily walk from The Royal Melbourne Hospital to the University of Melbourne without needing to wait for traffic.

Complete with lifts at all four entrances, the new station will make it easier for everyone moving through the station and around Parkville.

As major construction comes to an end below ground, crews have begun returning space to the public.

In mid-May the project reopened a single lane of traffic in each direction on Grattan St between Flemington Rd and Royal Parade. This section of Grattan St has been upgraded with wider footpaths, new bike lanes, more bike parking spaces, seating and new bus shelters.

The Metro Tunnel team is making excellent progress on train testing in the tunnels and on the Cranbourne/Pakenham and Sunbury lines, with trains undergoing more than 2000 hours of testing so far.

The Metro Tunnel will connect the busy Sunbury and Cranbourne/Pakenham lines via a new tunnel under the city, creating an end-to-end rail line from the north-west to the south-east, freeing up space in the City Loop and better connecting all Victorians to jobs, healthcare, and education. ●

PARKVILLE ASSOCIATION

Planning ahead

The 57th annual general meeting (AGM) of the Parkville Association was held on May 13 at Naughtons. We are very fortunate to have its owner Ryan Moses as a member and use the venue on a Monday when it is closed to the public.

Our guest speakers were Deputy Lord Mayor Nick Reece, and Claire Johnson and Matt Venderpeet from Rail Projects Victoria. We also had a chat with Sgt Nick Parisis from Victoria Police about community policing matters.

Rob Krelle retired from the committee after more than 10 years including two as president, as did Ryan Moses (fair enough given two pubs and two kids taking a little time in his life), who will continue to assist with social matters.

We welcomed two new committee members being Michael Aleisi, a communications expert from West Parkville and Jared Dyson, Deputy Dean of Trinity College and a local resident.

Nick Reece gave an excellent overview of his role and the City of Melbourne's plans for this year. He emphasised the importance of the suburbs of Melbourne and fellow councillor Davydd Griffiths gave an update on some safety matters. Nick will become the Lord Mayor in June and we wish him luck in the 2024 Mayoral election.

With nearly 60 of our 180 members present, the meeting was a great success and now having two members from the colleges across Royal Parade we are truly representative of the whole of Parkville.

On the subject of the University, we have entered into a collaboration with Trinity College where their students will assist gardening in the nature strip reservations initially in South Parkville.

Pictured above are (left to right) senior student Peter Lowe, myself, Dean of Trinity Residential College Leonie Jongenelis, student coordinator Asha Goddard and Deputy Dean and Parkville Association committee member Jared Dyson. When you see the team at work say "hi" as students have always been an integral part of Parkville!

On the subject of safety, I met with senior representatives of the e-scooter companies recently to discuss safety together with a couple of other residents' association leaders.



We all have concerns about the safety on our roads and pavements so as soon as the arrangements are formalised, we need to have a major input with the council to the tender document. This is critical as with geo-fencing pavements can be protected and both the use and parking of the scooters controlled.

I am also working to get the road rules in front of as many students as possible to ensure our local road rules are followed. We tend to forget overseas students often grow up in a totally different environment and need help understanding our road rules. Given we have two new hook turn junctions coming up on Grattan St, we may also need help!

Finally, you may have noticed measuring strips on the roads in South Parkville. They were there to measure traffic before and will be there after Grattan St reopens. Following that there will be a meeting with South Parkville residents regarding "rat running" and speeding.

Enjoy June and hopefully the sunny weather continues! ●

Rob Moore
PRESIDENT
PARKVILLE ASSOCIATION



CARLTON NEIGHBOURHOOD LEARNING CENTRE

Celebrating National Volunteer Week

National Volunteer Week (May 20 to 26) is Australia's largest annual celebration of volunteering.

WORDS BY
TONY MILNE - EXECUTIVE OFFICER

This year, we embraced the theme "Something for Everyone," recognising the diverse passions and talents volunteers bring to our communities.

It's a time to highlight the essential role volunteers play and to invite those who haven't yet volunteered to discover their unique place in this vibrant world.

At Carlton Neighbourhood Learning Centre (CNLC), we see firsthand the transformative impact volunteers have on our community. Our dedicated volunteers are

the backbone of CNLC, from helping in our classrooms with adult education, through to food relief support. Their commitment and passion make a real difference in the lives of those we serve.

One of our standout initiatives is our free community lunch. Every Thursday, our community lunch, prepared and served with assistance from volunteers, brings together people from all walks of life, fostering a sense of community and belonging. During the past year alone, CNLC volunteers have provided more than 400 community lunch meals and food relief for 600 individuals.

National Volunteer Week was the perfect opportunity to celebrate these incredible contributions and to show our gratitude. Volunteers at CNLC not only support our programs but also bring a wealth of skills and perspectives that enrich our community.



From teaching English to new migrants and refugees and helping in the garden to helping with administrative tasks and fundraising, there truly is "Something for Everyone" in volunteering at CNLC.

While National Volunteer Week is now behind us, we use the opportunity to invite

everyone to explore the wide range of volunteering opportunities available. Whether you're passionate about education, community welfare, or simply want to give back, there's a place for you at CNLC.

Join us in celebrating our volunteers and discovering the power of volunteering. ●

WHAT'S ON June



Experience Melbourne's inner city buzz this month! Explore eclectic art galleries, indulge in gourmet dining, and dance the night away at vibrant nightlife spots.



BEYOND HOUSING EXHIBITION
The *Beyond Housing* exhibition invites viewers to consider the links between both the practice and theory of creative architectural design.

Uni Melb, Glyn Davis Building, Masson Rd

UNTIL JUNE 2, 10AM - 4PM



UNSUNG HEROES AND REBEL SOULS IN ITALIAN WAR STORIES

Come along to a talk focusing on acts of courage, defiance, and sacrifice during WW I and II by individuals that mainstream history has relegated to the sidelines.

Museo Italiano, 199 Faraday St, Carlton

JUNE 4, 6.30PM - 8PM



SCIENCE GALLERY FRIDAY NIGHT SOCIALS

Science Gallery's monthly after-dark events return, with a viewing of the current exhibition *NOT NATURAL*, and special art installations from local artists.

Science Gallery, 700 Swanston St, Parkville

JUNE 7, 6PM - 9PM



CLIMATE CAFE SERIES

A special supported Climate Cafe for young people to have open discussions with science and mental health experts about the climate crisis in our shared world.

Learning Lab, Melbourne Museum
11 Nicholson St, Carlton

THURSDAY, JUNE 6, 4.30PM - 6.30PM



CARLTON CONVERSATIONS ARE BACK

Featuring Morry Schwartz, publisher and property developer. Established Schwartz publishing in the 1980s.

Further info: carltonresidents.org.au
Clyde Hotel, 385 Cardigan St, Carlton

JUNE 24, 6.30PM



COMMUNITY GARDENING WORKSHOPS

Join for a series of free and fun monthly gardening workshops with Cultivating Community in the front garden at Kathleen Syme Library and Community Centre.

251 Faraday St, Carlton

SATURDAY, JUNE 15, 2.30PM - 3.30PM



THE COMMUNITY GROCER CARLTON

The Community Grocer Carlton is a weekly pop-up fruit and vegetable market selling up to 140 types of fruit and vegetables at affordable prices.

510 Lygon St, Carlton

FRIDAYS, 8AM - 12PM



COOK TO CONNECT

Join a dietician in these sessions to learn new tips and tricks for cooking healthy and delicious meals. Even without all the bells and whistles of a full kitchen it is still possible to make nutritious food.

Kathleen Syme, 251 Faraday St, Carlton

TUESDAYS, UNTIL DECEMBER 17, 11AM - 1PM



LOCAL LUNCH CLUB

At the Local Lunch Club, a delicious free vegetarian lunch will be cooked on-site by Open Table using diverted surplus food that otherwise would have gone to waste.

Kathleen Syme, 251 Faraday St, Carlton

UNTIL AUGUST 17, 12PM - 2PM



A NATION DIVIDED: THE GREAT WAR AND CONSCRIPTION

This exhibition from the Old Treasury Building tells the story of this extraordinary period in our

Old Treasury Building, 20 Spring St
oldtreasurybuilding.org.au

UNTIL AUGUST 25, 10AM - 4PM



EAST MELBOURNE NEIGHBOUR NETWORK

The East Melbourne Neighbour Network aims to create a thriving and inclusive community and provides a range of health and wellbeing activities for people of all ages, as well as a community choir. For further info contact:

Sue and Ann-Maree: emnn3002@gmail.com

WEEKDAYS @ VARIOUS TIMES

Business Directory

CAT SITTER

PURRRFECT CAT SITTER

Does your cat prefer to stay at home while you're away? I come to you!

Visiting the suburbs of Inner City News.

[@purrrfectcatsitter](https://www.instagram.com/purrrfectcatsitter)
0448 692 650
ben@purrrfectcatsitter.com



HEALTH & BEAUTY



Nº 1 WOMEN'S HEALTH

women's health matters

Telephone (03) 9132 9644
www.number1womenshealth.com
[number1womenshealth](https://www.instagram.com/number1womenshealth)

POLITICIAN

BE STRONG NOT TIRED

PRIME 40

13 Hyam pl, Carlton 3053
www.prime40personaltraining.com.au

Proudly representing the community in inner Melbourne

LIBERAL VICTORIA **Evan MULHOLLAND MP**
NORTHERN METROPOLITAN REGION

evan.mulholland@parliament.vic.gov.au



FIRELIGHT FESTIVAL RETURNS

WITH WORLD-FIRST UNDERGROUND LIGHT SHOW

A never-before-seen labyrinth of light and sound will dazzle Docklands this winter as an extension of the much-loved Firelight Festival.

Firelight Labyrinth will transform the underground space at Marvel Stadium into a spectacular maze designed by international creative lighting specialists, Mandylights.

"Firelight Labyrinth is the largest 3D video installation ever built in Australia," said Mandylights CEO Richard Neville. "The maze is essentially a giant three-dimensional video screen that people can walk inside."

"The term 'immersive experience' gets bandied around a lot these days, but by putting people in the middle of this video maze - well, you can't really get any more surrounded and immersed than that!"

Richard said many of the Mandylights design team began their careers in local high schools and amateur theatres. From these small-scale beginnings to vast global projects, their passion runs deep.

"Even though we're working with more lights and more pressure these days, my team and I feel lucky to be paid to play with lights. It's great fun."

The designers spent two months exploring unused spaces around the City of Melbourne before deciding on Marvel Stadium's underground car park.

"For concerts and theatrical productions, lighting is a supporting element," Richard said. "With Firelight Labyrinth, there is no artist or set to light - the lights are the whole show."

"We've had a blank canvas and an open creative brief. So, we can plunge everybody into darkness and present something amazing."

"In this day and age - when audiences have seen and done everything - it's rare to be able to offer a completely new, never-before-seen experience."

"It's always great to present work in Melbourne because people here don't need to wait until they see photographs on Instagram - they naturally want to go and explore unique experiences."

City of Melbourne's free Firelight Festival will once again illuminate New Quay Promenade, Victoria Promenade and Harbour Esplanade in Docklands, offering a diverse range of tasty eats and entertainment.

There'll be fire performers, African drumming, live music and storytelling, plus fire pits and drums, flame jets, fire sculptures and arches.

Warming food and drink will also be on offer, including dumplings, smoked meats, paella, churros and hot chocolate.

A team of fire drummers will be among the performers who'll create a buzzing atmosphere.



DON'T MISS FIRELIGHT

The free Firelight Festival will take place on the first weekend of the school holidays, from Friday 28 June to Sunday 30 June.

The ticketed Firelight Labyrinth experience will continue until Sunday 14 July.

Visit firelight.melbourne.vic.gov.au for more information.



How to get your flu vaccine

Bookings for flu vaccinations are now available for our community sessions, individual appointments and workplace immunisations.

Vaccination is the most important measure to prevent influenza and its complications and avoid passing the virus to family, colleagues and friends. It is recommended for all people six months of age and over.



For more information visit melbourne.vic.gov.au/flu vaccine or book via the QR code.

